

THE AMERICAN LEGION

BOYS STATE OF KANSAS



44th SESSION

MAY 31 - JUNE 6, 1981

Elected Officials - 1981 Session

Governor - Wade Williams
Lt. Governor - Greg Larsen
Sec. of State - Brian McLean
Att. General - Scott Jensen
State Treasurer - Kenneth Frische
Comm. of Ins. - James Azeltine

Supreme Court Appointments

Troy Johnson - Chief Justice
Kevin White
Bradford Hale
Dan Melchior
Dan Fink
Bill Jackson
Jeff Wildin

Boys Nation

William Jackson, President 1981

Bradford Hale

Contents

The week in progress.	2-15
City pictures.	16-24
Highway Patrol.	25
Advisors.	25
Counselors.	26



Russ Whorley, Executive Director

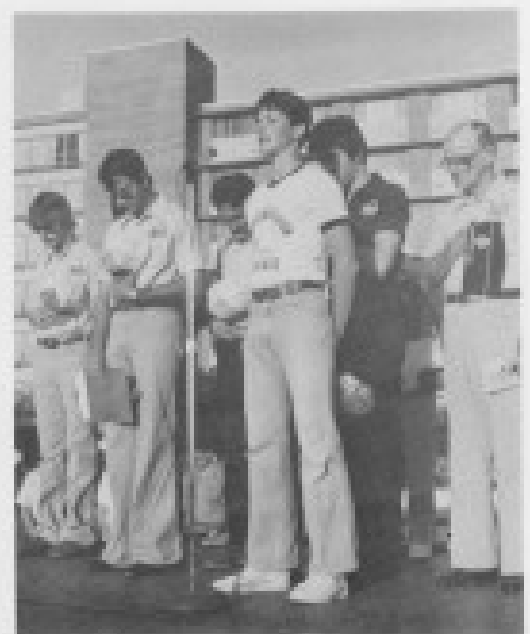


Ron Wineinger, 1980 Governor



David Ambler, University of Kansas



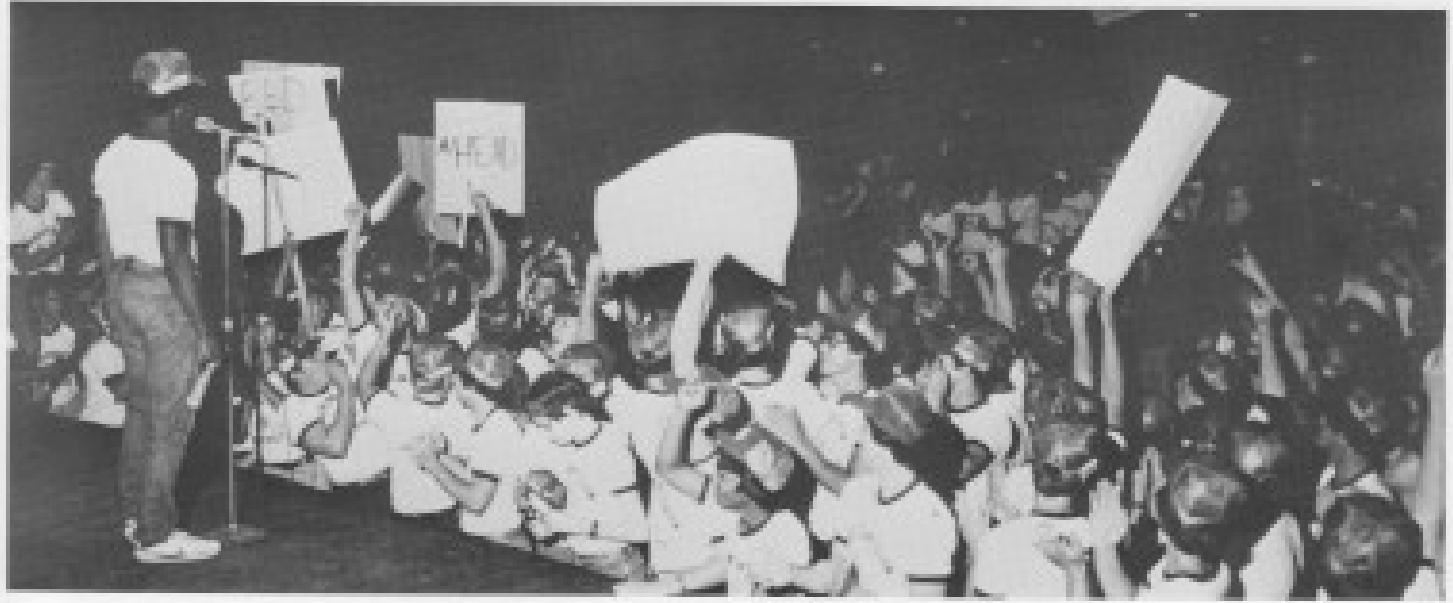






Lebro Grisalano, State Commander

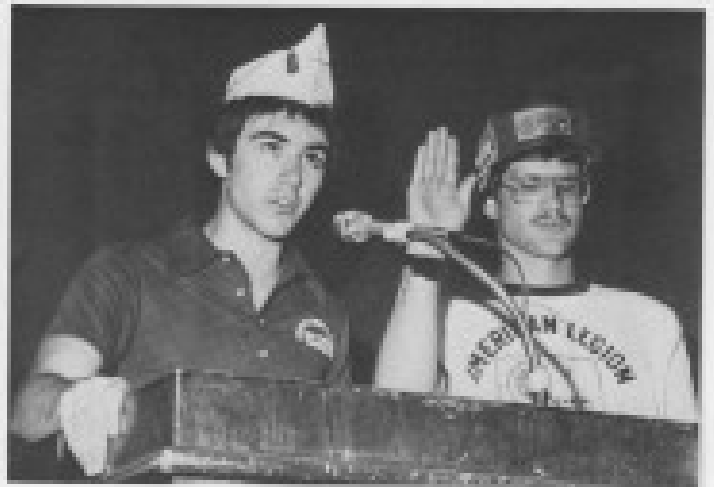






Governor John Carlin





Wade Williams 1981 Governor



Jack Brier, Sec. of State
Bob Stephan, Attorney General

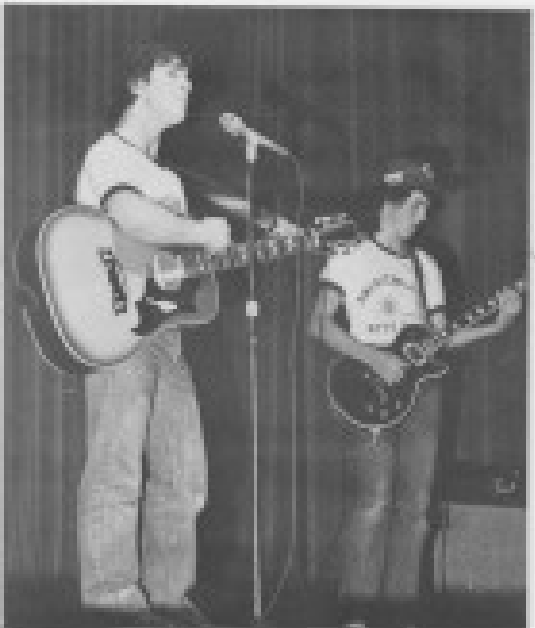


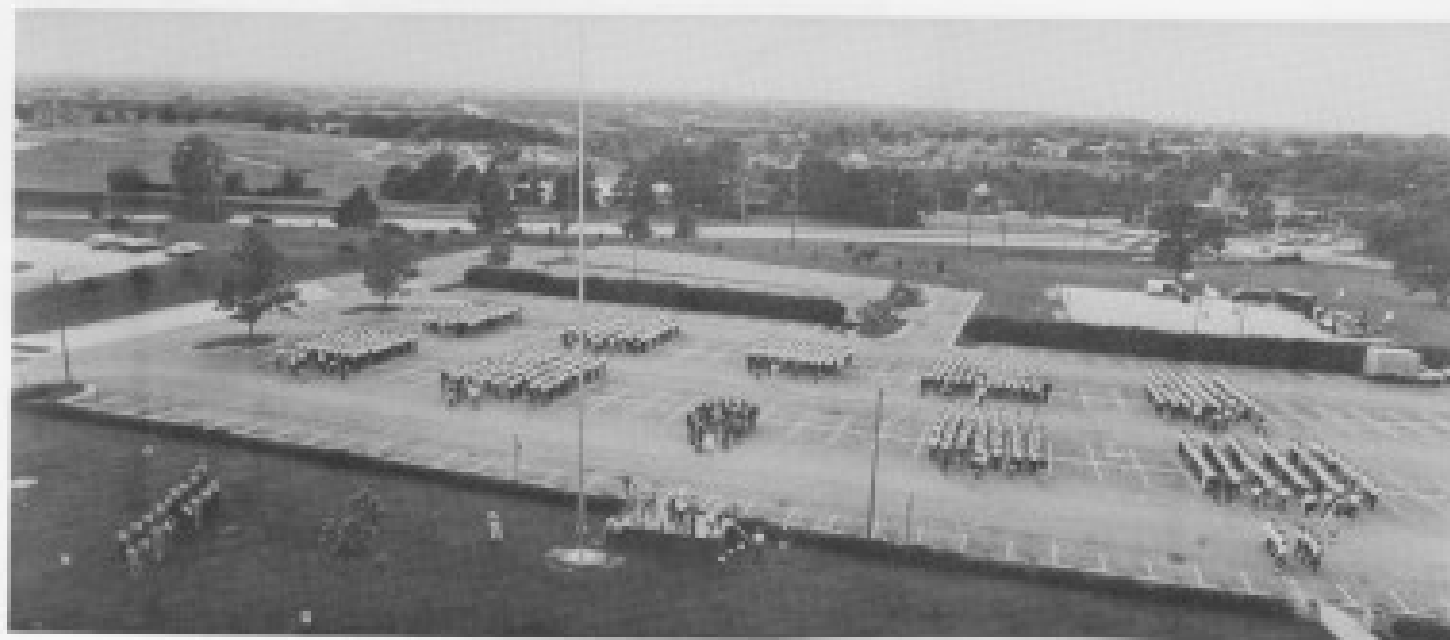
Boys State Supreme Court





Boys State Chorus

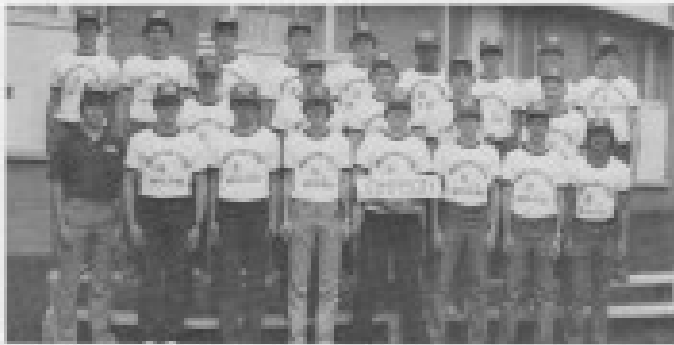




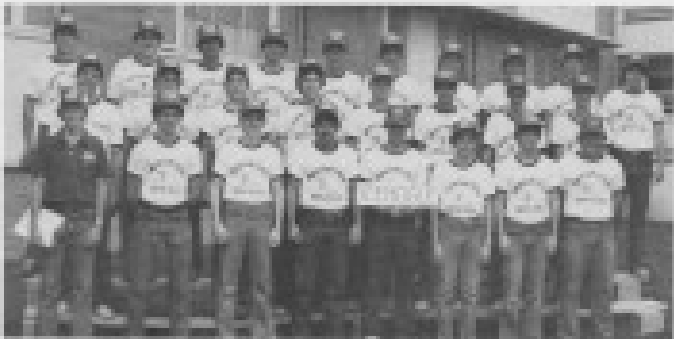








City of Johnson—Counselor, David Williams—P. Arenson, S. Blow, A. Buchele, N. Craig, T. Crow, J. Drouillard, J. Elliot, D. Ficker, T. Hedrick, W. Jackson, B. Kelms, B. Kersting, J. Larson, R. Linsey, D. Oliver, R. Sheldon, T. Smith, P. Srinual, T. Stephan, B. Wolf, S. Young



City of Icenogle—Counselor, Scott Farris—P. Belden, P. Damman, S. Duran, D. Elloff, K. Forge, V. Fulton, T. Green, W. Hunt, L. Kinsey, J. Kitch, D. Linn, J. Mays, T. Postler, D. Roemer, M. Russell, W. Schneeweis, C. Skaggs, T. Swenson, D. Tachman, B. Underwood, M. Warner, R. Wiggins, G. Wolfe, A. Zwick



City of Goss—Counselor, Alec Creighton—C. Alexander, B. Beeier, S. Bronfield, D. Bofkin, J. Cannon, J. Cheshire, P. Cochran, D. DeWitt, J. Ellis, E. Friel, D. Johnson, B. King, J. Luers, B. Middleton, A. Peroutek, D. Rigenberg, J. Shuster, R. Simpson, E. Singleton, C. Smith, S. Streuter, R. Taylor, S. Wee, K. Zeke



City of Hargreaves—Counselor, Mike Gourley—J. Ackerman, M. Baugh, S. Baling, F. Clare, S. Clark, S. Driscoll, B. Ebel, D. Feller, J. Hesse, R. Heeb, J. Hill, S. Kidwell, B. Koshler, T. Lucas, M. Messer, M. New, D. Propp, R. Roseffa, J. Sheets, M. Shaney, J. Smith, D. Soaker, B. Topham, D. Utter, T. Witt



City of Hostler—Counselor, Gary Riley—M. Saxon, R. Bryan, J. Combs, K. DeJmal, C. Eschman, T. Fitzgerald, S. Frantum, R. Hays, R. Hermon, S. Kapfeld, F. Logback, D. McAtee, S. McCall, B. Mead, R. Mick, D. Perry, L. Reimer, J. Rockett, D. Scott, D. Spain, P. Thom, G. Wilson.



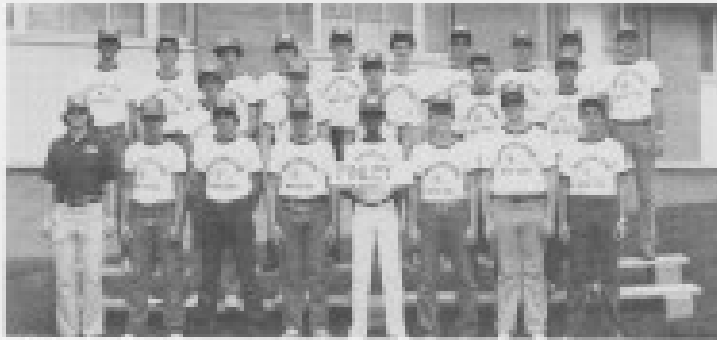
City of Lawrence—Counselor, David Reinolds—D. Anderson, T. Bias, M. Billquist, T. Black, E. Casey, P. DeCresel, J. Fowler, R. Fried, M. Goldsmith, K. Hemmerl, R. Howard, B. Hull, T. Johnson, R. Johnson, J. Keithline, J. Kennedy, T. McGrath, K. Parker, B. Sanders, M. Toney, K. Wagner, E. Wilcher.



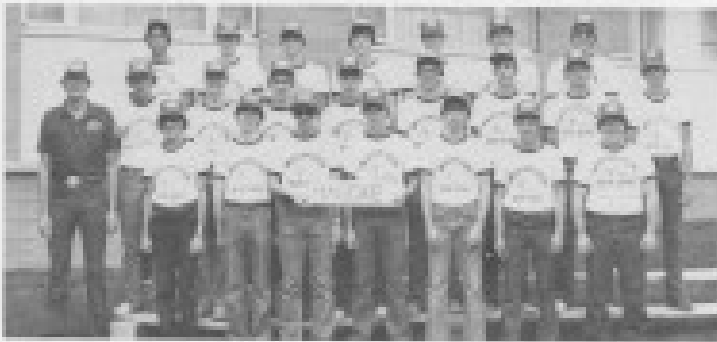
City of Schultz—Counselor, Mark Bannister—J. Brown, M. Clabough, G. Demel, A. Ferguson, R. Fleming, J. Grubel, T. Hagen, W. Henry, R. Holloway, J. Karaszewski, R. Kethamer, P. Kennedy, R. Kramer, C. Lazzarino, M. Lecklifer, S. Meyers, D. Miller, C. Parker, T. Pfeiler, S. Swafford, S. Walker, K. Welzel, E. Woodon.



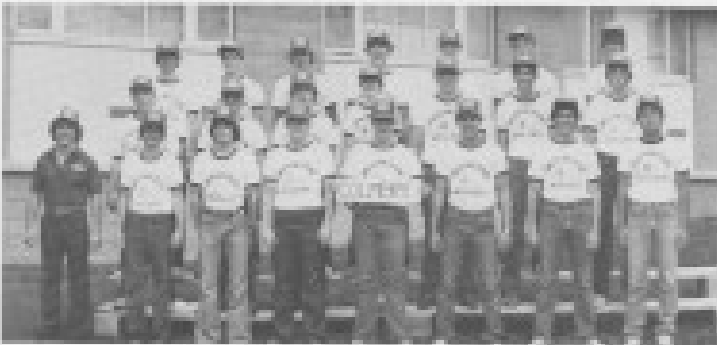
City of Hiatt—Counselor, Dirk Leas—R. Barnum, M. Boos, T. Brando, E. Daniels, E. Elmore, D. Fink, R. Geringer, R. Hughes, K. Jensen, J. Keithell, S. Lee, W. Mounkes, D. Nebengall, Z. Peters, L. Rotzoff, L. Scott, J. Shuster, D. Smithdale, T. Thurlow, B. Tillery, J. Unruh, G. Wheeler, K. White.



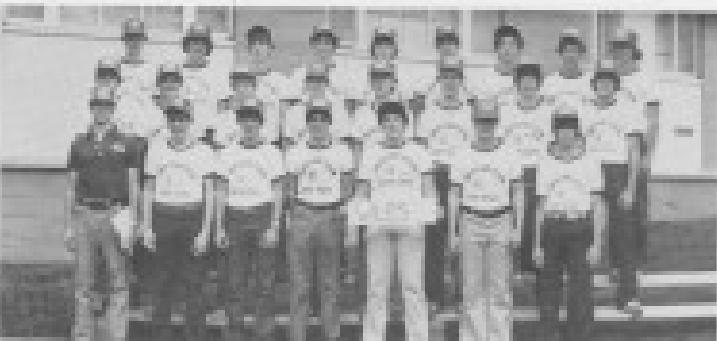
City of Finley—Counselor, Shawn Murphy—J. Avey, G. Bogina, C. Balda, A. Burk, R. Christians, P. Dougherty, M. Erickson, D. Fort, G. Haynie, J. Hershberger, R. Kirk, R. McLaughlin, K. Muft, S. Parker, P. Phillips, G. Rodgers, E. Rosey, J. Schmidt, B. Stevens, K. Thompson, J. Welch, W. Williams.



City of Maucke—Counselor, Scott Johnson—R. Abbott, M. Bennett, F. Boardman, D. Clarkson, R. Ellis, D. Heuser, M. Hummingbird, D. Jensen, D. Keehn, P. Luedders, P. McKernan, R. McNew, R. Orth, J. Perkins, T. Polan, S. Reynolds, S. Ruhman, M. Seibel, L. Smart, D. Spangler, F. Taylor, B. Van Schmus, R. Warner.



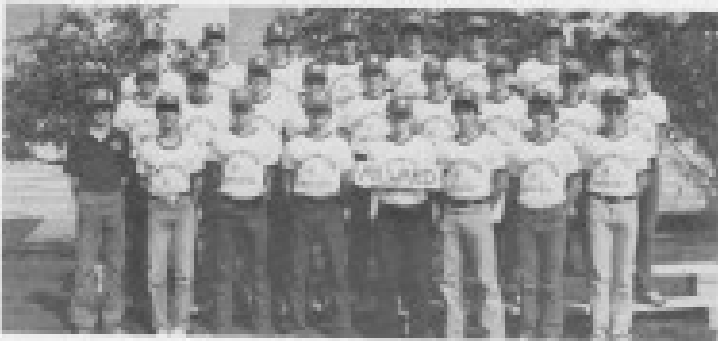
City of Colmery—Counselor, Craig Utie—D. Allen, T. Angstadt, A. Borklaci, F. Chase, T. Damman, A. Edwardson, B. Fisher, J. Gelsinger, J. Ho, D. Hutchison, E. Ice, G. Kottman, A. Krause, A. Marshall, L. Morgan, J. Nicholas, J. Porter, R. Russell, G. Stahl, E. Thompson, D. Waugh, R. Wierhorn, D. Murovski.



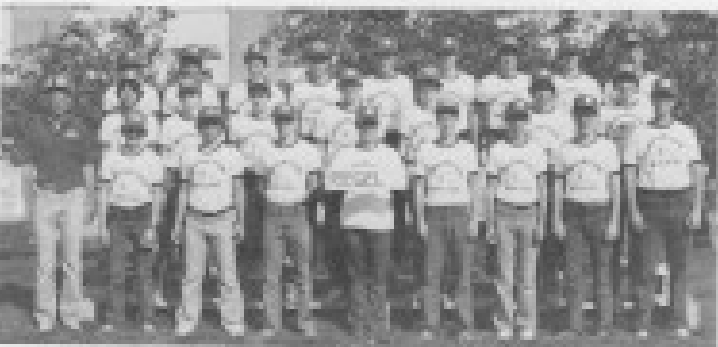
City of Wiles—Counselor, David Earle—L. Apperson, R. Barnes, T. Bower, M. Dublin, K. Farmer, D. Frazer, W. Hanna, R. Henry, C. Jennings, D. Johnson, K. Johnson, K. Kelly, G. Lossie, T. Moore, D. Murovski, K. Post, C. Probst, B. Ragadale, J. Schaeter, T. Sheffer, S. Sorenson, T. Warren, D. Williams.



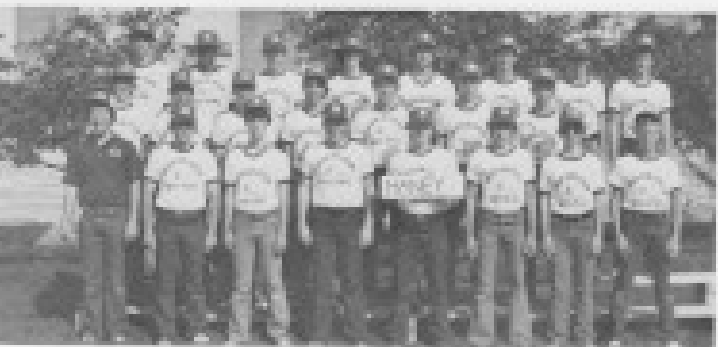
City of Seymour—Counselor, John Eslop—C. Barlett, R. Colborn, R. Cumings, M. Dobbie, C. Ellis, M. Ferguson, J. Hoffmann, G. Hughes, B. James, K. Kellison, G. Larsen, L. Lowe, J. Mueller, R. Mumahan, M. Northrop, G. Obamy, G. Pedersen, M. Ptocek, J. Selter, R. Spencer, M. Thom, D. Watkins.



City of Ayleard—Counselor, Craig Rumpel—J. Anderson, J. Azelline, T. Baker, R. Boys, B. Brown, J. Buffon, B. Crockett, T. DeGruson, T. Johnston, A. Klug, P. Hahn, R. Larson, T. McMahon, H. Moore, R. Nugent, R. Post, V. Rugh, S. Schmecker, M. Senecal, L. Tinker, S. Vickers, T. Wessel, G. Wheeler, B. Wiscoy.



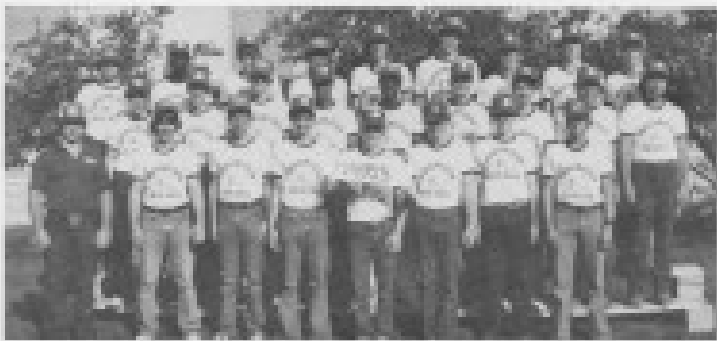
City of Biegel—Counselor, Andrea S. Bynum—R. Beggs, N. Bick, J. Boy, J. Collins, B. Fields, T. Gulya, H. Hillis, M. Janda, G. Jensen, R. Just, J. Keith, C. Leininger, D. Lowe, T. Means, C. Moser, V. Newlin, P. Rupp, E. Scheck, R. Sears, T. Stephenson, S. Vanatta, R. Warren, T. West, D. Whiting.



City of Haney—Counselor, Dave Beutlein—D. Argo, T. Bell, S. Beniman, D. Chambers, D. Cloud, L. Colley, B. Hale, J. Harding, M. Jennings, L. Junod, T. Koutman, S. Lyman, B. McLean, W. Morcotte, T. Mosler, E. Peterson, K. Seely, D. Vignery, G. Whitaker, J. Williams, D. Winsor, T. Young.



City of Grauertolz—Counselor, Max Cooper—M. Beady, D. Brungardt, C. Bynum, D. Confer, B. Eckert, G. Flax, K. Fox, J. Frownfelter, M. Grant, D. Grossenbacher, J. Herder, K. Honomicht, M. Kester, J. Kuhlman, J. Lube, M. Pursel, S. McIntosh, M. Norris, J. Shepard, S. Sls, R. Tharp, S. Vaughan, D. Walwright, D. Wilson.



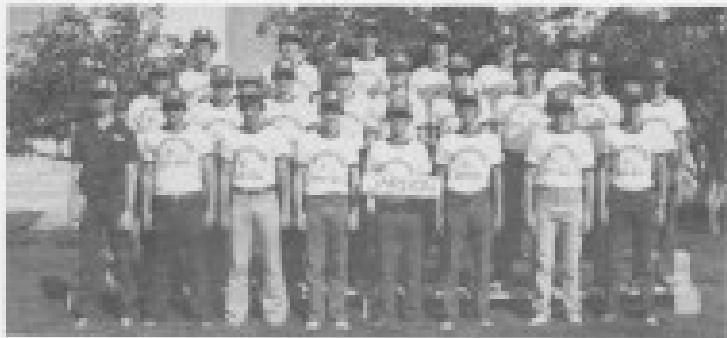
City of Harts—Counselor, Michael Hennickson—T. Black, A. Braeteman, A. Cabrera, D. Coulter, T. Donovan, P. Drees, J. Gordon, J. Gum, K. Harrison, S. Horton, P. Jackson, M. Livingston, K. McMurray, D. May, D. Melchior, T. Newell, B. Norman, C. Oestreich, K. Richards, J. Sargent, C. Spencer, M. Starstrom, K. Stroud, J. Wildin, E. Wisniewski.



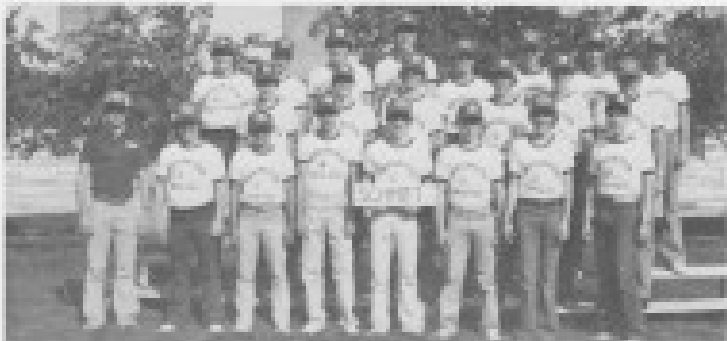
City of Lane—Counselor, Scott Lickleig—D. Anderson, B. Brandt, J. Bullock, R. Burns, T. Coats, T. Dett, T. Fieldson, R. Griffin, M. Hand, S. Harter, G. Higgins, A. Hill, J. Miller, D. Monroe, C. Nieman, K. Olson, A. Orpeza, S. Paffy, M. Percheval, S. Senon, D. Semler, D. Swain, T. Trebbe, H. Williams.



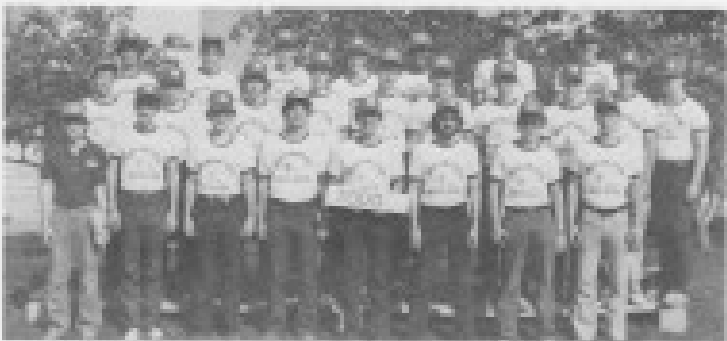
City of Nirk—Counselor, James Gilbert—R. Bollinger, J. Bowman, L. Brunett, P. Carlson, M. Delaney, J. Elliott, K. Frische, R. Gibson, E. Goodwin, T. Harding, J. Hauber, W. Huffman, R. Kotzer, J. Keating, J. Lauer, S. Leonard, G. McCortley, W. Offen, A. Phillips, T. Rider, J. Robertson, R. Shuffelworth, S. Stafford, B. Stoyton, T. Yankovich.



City of Jordan—Counselor, Don Grelinger—J.Allen, D.Baker, R.Barker, D.Barna, T.Dest, T.Fayette, M.Froetschlar, J.Gilland, D.Grelinger, S.Hansen, J.Heeb, W.Henrie, K.Hoffman, J.Kennedy, K.Lilly, G.Mallon, E.Moss, R.Payne, K.Peirce, T.Rampe, D.Schremer, D.Stok.



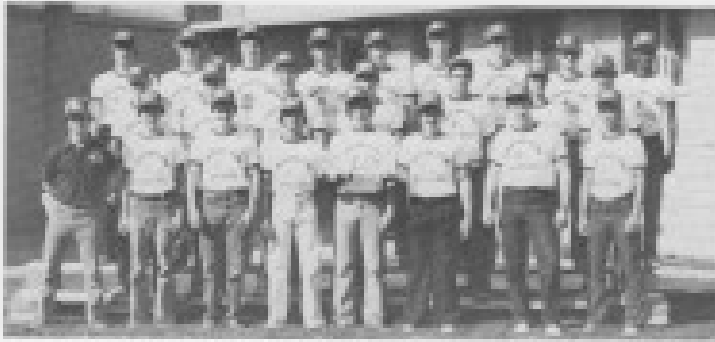
City of Schmitt—Counselor, Steven Drake—J.Allen, M.Brennan, B.Caswell, A.Clines, M.Dalby, J.Erison, F.Fieldson, S.Hauler, J.Heron, W.Hodges, C.Kelsey, J.Mugler, K.Neuenwander, S.Patrick, J.Pool, D.Rodenbaugh, L.Sperry, M.Thomas, R.Townsend, G.Wilkinson, L.Wooten.



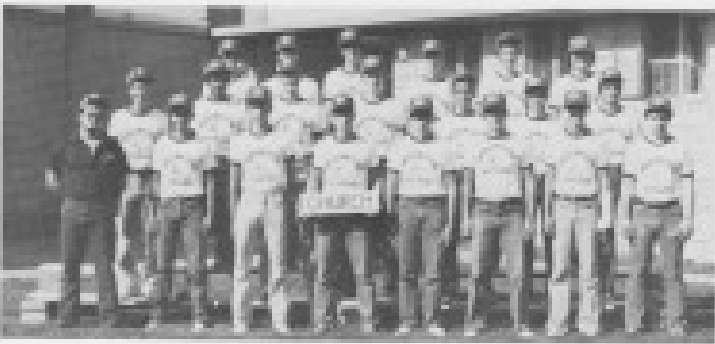
City of Todd—Counselor, Michael Welsh—V.Avila, R.Broadfoot, L.Burns, D.Durst, D.Elliott, K.Foster, C.Glenn, D.Hodley, D.Hoffack, M.Hesman, S.Hopper, K.Johnson, K.Kelly, A.Moore, K.Nol, P.Martin, L.Pottinger, B.Reble, J.Sellin, R.Smith, J.Trusciale, C.Umyh, C.Walker, R.Willard.



City of Christy—Counselor, Brooke Haynes—D.Abbott, B.Brimman, W.Charlton, T.Dasenbrock, K.Dimare, H.Edlin, L.Finley, B.Garbee, S.Hastine, K.Hoppack, J.Kirby, J.Lane, D.LMM, J.Mokown, R.Moggard, J.Pearson, D.Rowan, M.Salmont, R.Salvati, R.Shields, R.Snyder, D.Weber, R.Wheatly.



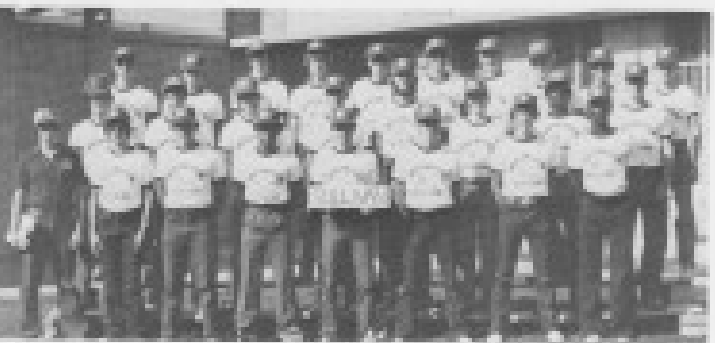
City of McCoy—Counselor, Larry Day—B.Borrientez, L.Boxer, T.Craig, J.Dennis, M.Dolsky, R.Dulichery, H.Edlin, G.Fiet, T.Fry, M.Hart, R.Hulver, A.Jones, P.Kesick, R.Laubengayer, B.Long, D.Melvin, K.Mercer, P.Merrifield, D.Ostmyer, J.O'Toole, D.Rankin, R.Vogel, K.Winter.



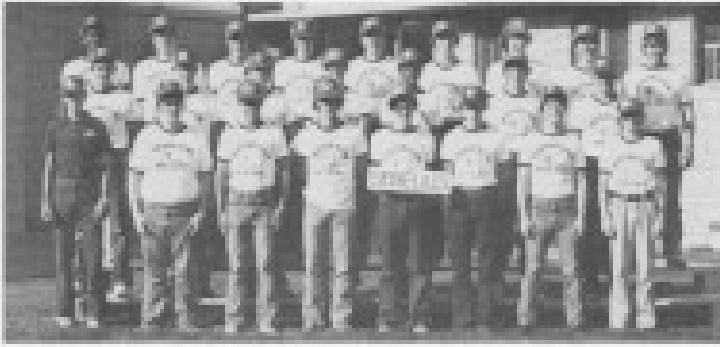
City of Church—Counselor, Eric Bronson—T.Boepple, J.Brooks, P.Burton, T.Corcoran, P.Hoffner, M.Hanna, M.Hoffman, D.Hralakia, S.Jolley, R.Levy, S.Mat, P.Mason, M.Meier, C.Miller, K.Nunn, R.Phares, M.Roe, R.Rupp, G.Sharpe, M.Wade, S.Zodrow.



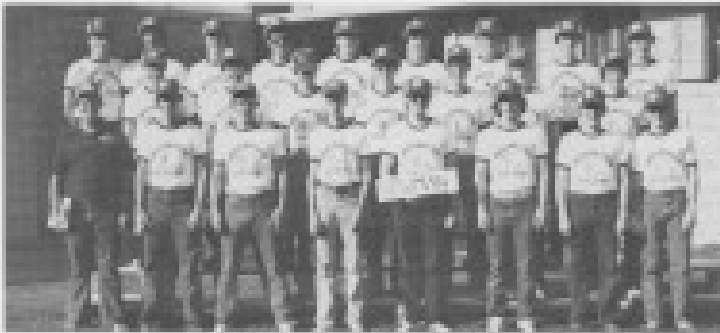
City of Glidden—Counselor, Daniel Hubbard—J.Blackwood, R.Boyer, D.Chandler, R.Cole, D.Dunlap, S.Ferguson, A.Hagman, T.Harris, C.Hersh, F.Hinman, R.Kendall, K.King, G.Lanson, J.McDonald, S.Marcionnet, K.Miller, E.Schultz, D.Smading, G.Storkopf, L.Tsen, K.Urwin, K.Urban, A.Waggoner, S.Williams.



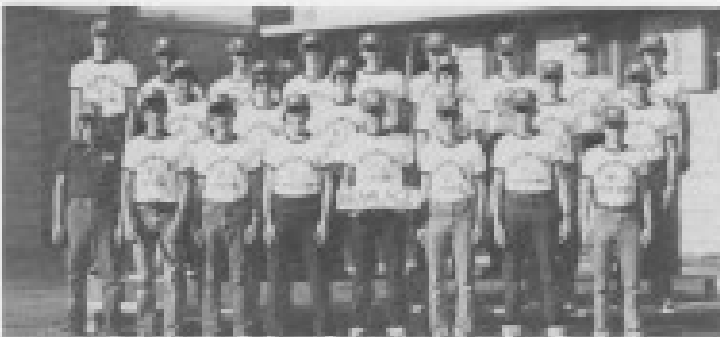
City of Sullivan—Counselor, Doyle Stock—W.Allison, L.Curtis, R.Davis, P.Daylor, R.Dumler, C.Edwards, W.Fagg, G.Friesen, S.Gish, A.Goodwin, E.Graham, J.Heronime, G.Hesse, S.Horton, D.Hulman, C.Kasenbrack, R.Kelke, D.Murphy, D.O'Brien, D.Founds, A.Roberts, C.Shea, G.Wasinger, R.Whyte, J.Wurt.



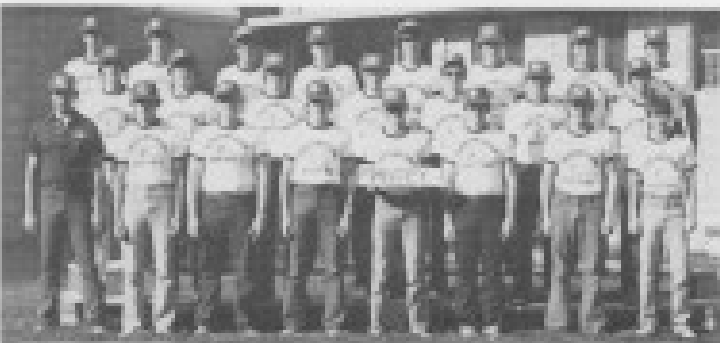
City of Sebellus—Counselor, David Roy—L.Andrews, J.Bomborg, J.Brennan, H.Brown, S.Camparini, L.Chapman, R.Douglas, M.Foster, D.Silvers, W.Holeman, J.Harris, L.Huebbergen, K.Kapler, R.Kubik, T.Lynd, S.Mauch, D.McIntire, T.Murphy, C.Orner, D.Petes, W.Roberts, E.Smith, S.Tempero.



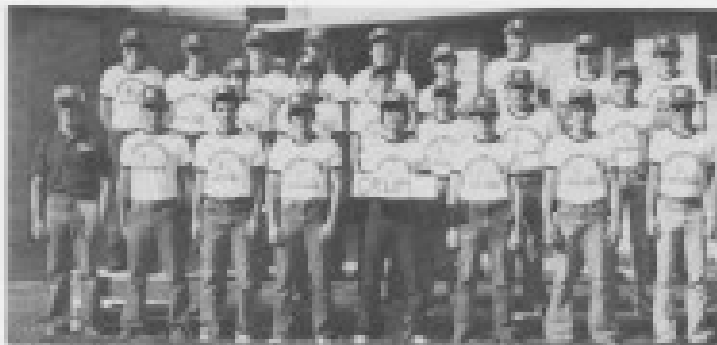
City of Newman—Counselor, Mark Williams—S.Bennett, E.Beye, B.Brown, D.Clark, T.Colglatzer, R.Douthat, T.Doven, K.Deake, D.Ritzmarrs, M.Gebler, K.Hinshaw, M.Kramer, T.Lindsey, T.McMillen, D.Miller, T.Moody, J.Pauls, D.Pennington, R.Prosser, E.Richardson, B.Schierling, K.Stubbings, M.Walt.



City of Starboge—Counselor, Terry Jacobson—J.Booth, F.Brown, M.Busch, R.Cox, K.Dillard, T.Dolenz, D.Franks, D.Gebler, M.Holt, D.Henny, S.Hodges, K.Johnson, L.Larsen, R.Leach, D.McHenry, W.Melley, T.Mul, A.Payne, C.Spencer, C.Stover, J.Tolke, S.Walt, D.Woods.



City of Mantley—Counselor, David Ryan—B.Browder, R.Clewell, L.Copeland, H.East, B.Glis, J.Fields, K.Griffin, J.Huntley, S.Jensen, J.Johnston, M.Korn, D.Kuo, J.Long, K.Mead, T.Meyn, R.Norton, S.Pretz, W.Rehm, A.Schmidt, S.Sorenson, C.Swisher, W.Whitehall.



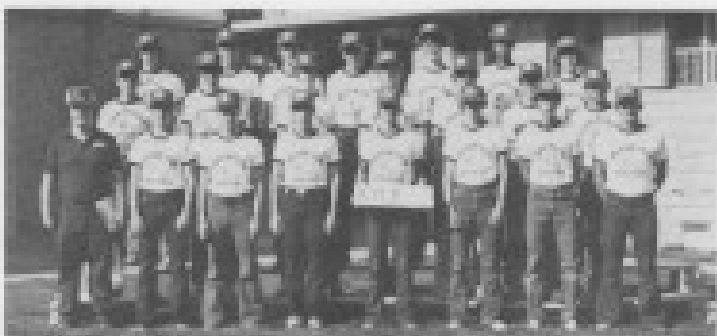
City of Crum—Counselor, Dana Meler—Y. Ameku, M. Broeckelman, R. Brown, J. Cassidy, R. Daniel, J. Duchery, T. Glas, J. Green, J. Hawk, S. Hoffman, R. Holcomb, R. Lopez, S. Mog, D. Munds, S. Nguyen, T. Oliver, G. Paxon, L. Poffyman, M. Rice, J. Schroeder, D. Simoneau, S. Ulmer, M. Ummer, D. Williams.



City of Janssen—Counselor, Randy Spron—J. Albert, S. Aleman, J. Aulen, M. Ballesteros, R. Blackford, D. Burns, J. Cary, J. Capple, K. Downey, N. George, J. Hutkerson, S. Kindall, R. Knox, J. Lusk, K. Lunswey, E. Moegel, B. Murphy, E. Olmstead, R. Poffitt, J. Seston, B. Tener, M. Wilson.



City of Fertill—Counselor, John Keating—P. Arthur, C. Bloom, G. Boyesen, D. Branson, T. Burgess, D. Champin, D. Delano, J. Downing, D. Faulner, W. Gruenbacher, M. Hays, T. Holmes, S. Lizzoff, T. Longman, R. Menmann, A. Ode, S. Paschall, D. Penterboom, D. Roshpouz, B. Richter, B. Shrock, D. Shumate, D. Smith.



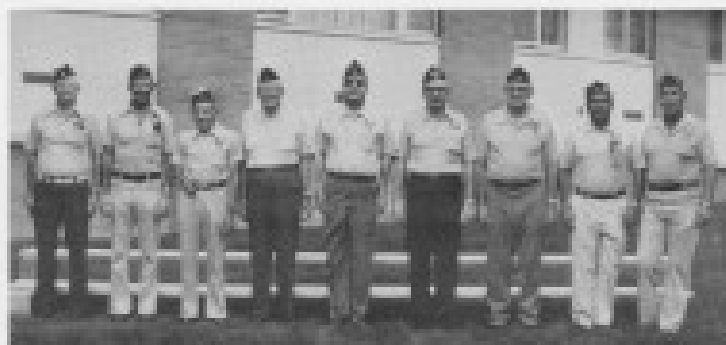
City of Kyle—Counselor, Craig McAndrews—D. Ahrens, N. Barclay, K. Beauchamp, G. Bethel, J. Brou, M. Sultman, R. Carlson, R. Davidson, D. Dehoff, E. Fisher, J. Gillson, L. Leon, C. Lindhorst, K. Miller, E. Morgan, D. Oala, R. Richter, J. Rose, P. Swanson, R. Turner, T. Weir.



Highway Patrol-Advisor: Sgt. Roy Kriendoll—A. McKee, D. Elliot, R. Spenser, D. Watkins, J. Mueller, M. Northrup, R. Mamahan, M. Placek, J. Albert, T. DeGruson, B. Murphy, R. Boyer, R. Holcomb, D. Miller, B. Meyers, R. Kelsheimer, A. Waggoner, D. Champin, K. Beauchamp, S. Zedrow, T. Harris, D. Smading, S. Blow, D. Oliver, T. Crow, T. Smith, S. Kindoll, J. Wurtz, D. Hutchison, J. Gelsinger, A. Krause, F. Chase, S. Williams, B. Ellis, G. Bogina, R. Boyd, D. Pennington, J. Sexton, D. Roshpout, A. Ferguson.



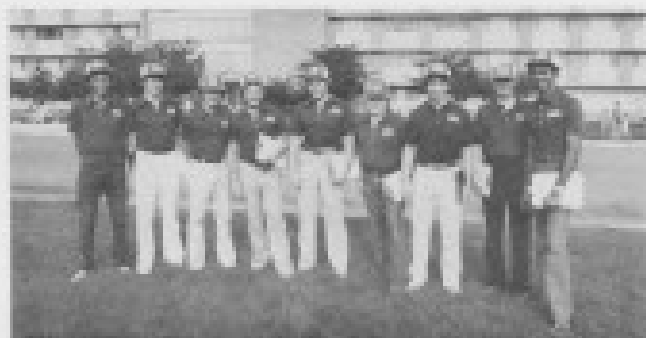
Advisors—Front row L-R: Fred Ledbetter, Dino Spigorelli, Barney Maxfield, Walter Rousso, Jack Workenline, Vincent Saucata, Vernie Baldwin, Walter Raymond, Russ Whorley, Patrick Finley, John Coffey, Harold Hollis, Grant Lane, Harold Finzemeler, Chio Moran, Dale Kerr, Jack McGowan, Cecil Goforth, Hollis Dunham.
Second row L-R: Larry Wagner, John Carr, Royd Dean, Bill DeVaney, Gumealinda Lomas, Wayne Alexander, Harold Parkes, Pete Werner, Bill Fenschler, Michael Cairns, James Bostick, Jeff Allen, Rex Gardner.
Third Row L-R: Bob Dunlap, Howard Wakefield, C. F. Arnold, Ron Welch, Harold Witham, Ralph Lickelg.



County Advisor-Bradley: Harold Witham, Eisenhower: Bill Foerschler
Kennedy: Fred Ledbetter, King: Barney Maxfield, MacArthur: Cecil
Goforth, Marshall: Vincent Sausada, Patton: Wayne Alexander, Per-
shing: Vernie Baldwin, Seltz: Charles Arnold.



Government Counselor-John Andra, Steve Gardner, Jeff Jensen,
Chuck Nelson, Chris Overbay, Juan Sepulveda, Ron Wineinger, Tim
Dunst, David Hardy, Joseph Malvoine, Greg Merkin, Mark Kopfenstein,
Chris Lynch, Pat Reitz, Stephen Sapp, William White.



County Counselor-Bradley: Thane Chostain, Eisenhower: Doug Curt-
wright, Kennedy: David Hyle, King: David Sandritter, MacArthur:
Sandeep Mukerjee, Marshall: Joe Wilcox, Patton: Charles Lawhorn, Per-
shing: Thom Sutherland, Seltz: Gopi Vasudevan.



Coordinators-L-R: Jay Shelton, Jim Anderson, Allen Klassen, Mike
Huber.



Staff Counselors-Paul Amato, Michael Blake, Bryan Ormas, Tony Dori,
Bruce Friesendahl, Jim Groszdel, Reed Hinkel, Scott Holman, David
Merritt, John Parker, George Rennels, Jim Roppa, George Slaughter,
James Smith, Dale Steudle, Gary Strahn, John Studer, Chuck Whipple,
Tom Worman.

Yearbook by:
Clay Kappelman
Photography
P.O. Box 3725
Lawrence, KS 66044